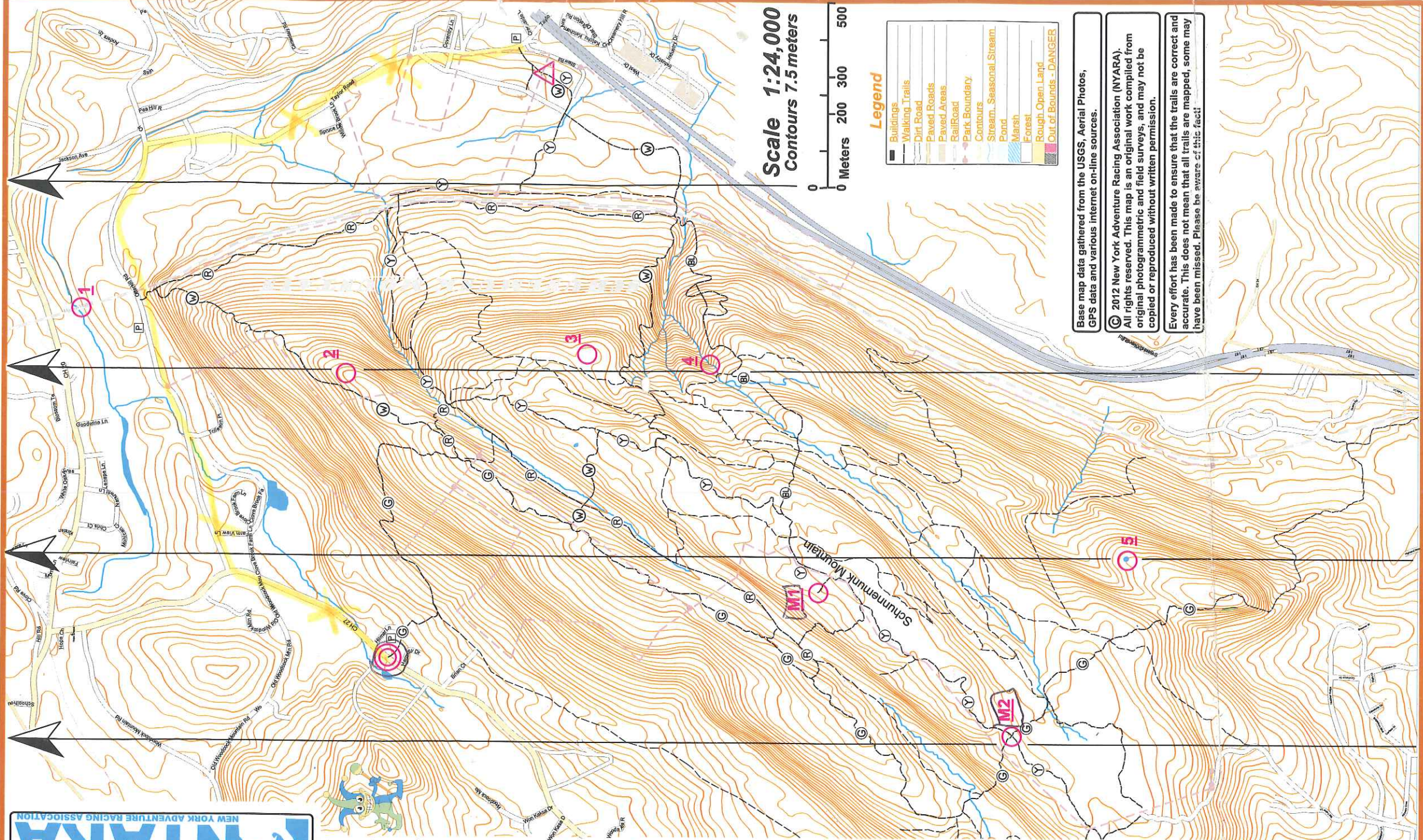




The Longest Day,
May 19th, 2012

Schunemunk Mountain State Park Orange County, New York



Scale 1:24,000
Contours 7.5 meters



Legend

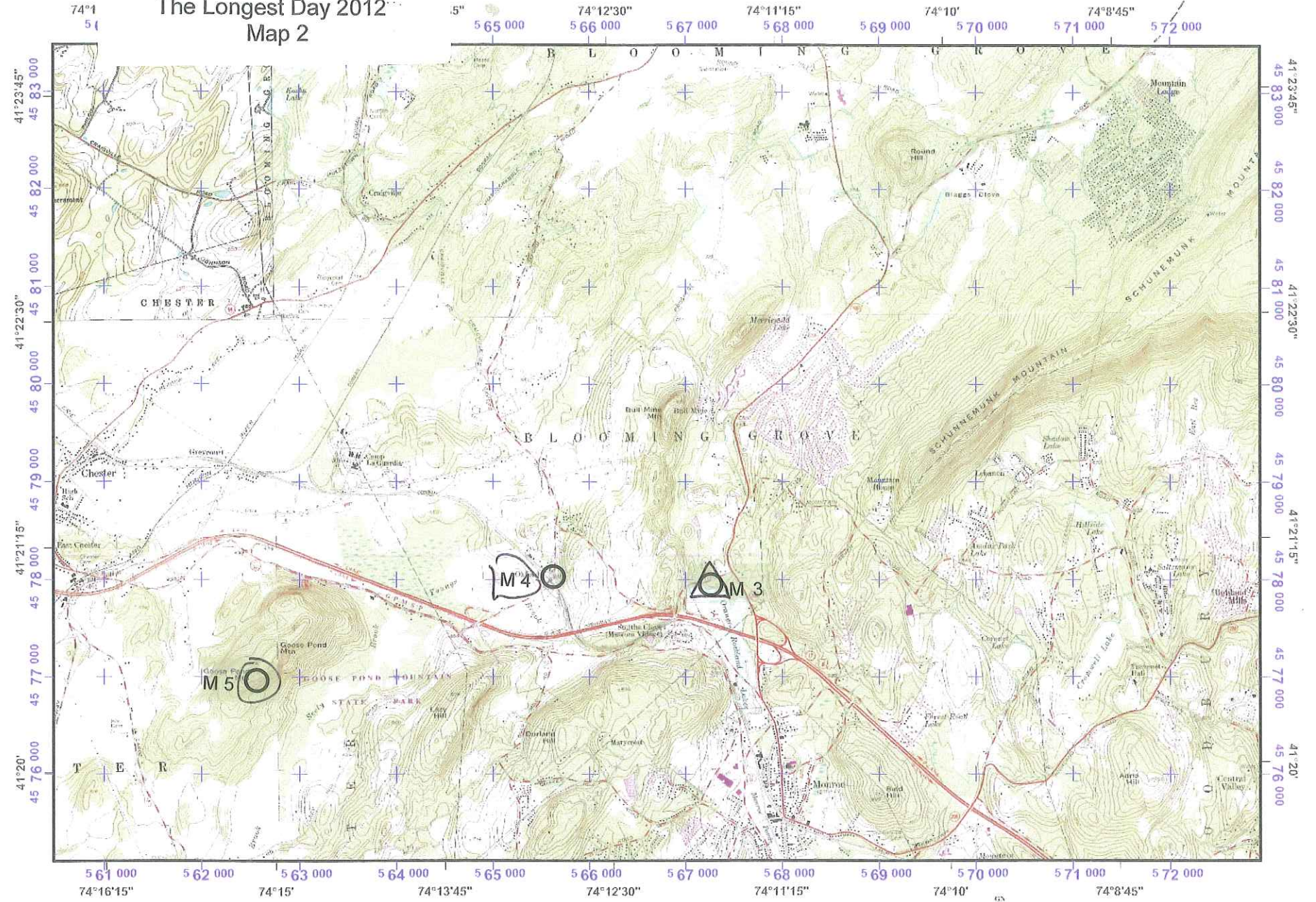
- Buildings
- Walking Trails
- Dirt Road
- Paved Roads
- Paved Areas
- Rail Road
- Park Boundary
- Contours
- Stream, Seasonal Stream
- Pond
- Marsh
- Forest
- Rough Open Land
- Out of Bounds - DANGER

Base map data gathered from the USGS, Aerial Photos, GPS data and various internet on-line sources.

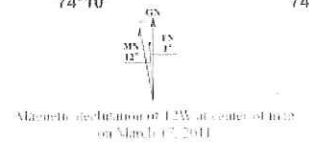
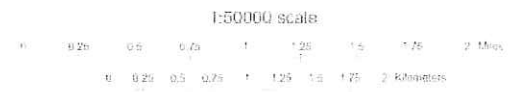
© 2012 New York Adventure Racing Association (NYARA). All rights reserved. This map is an original work compiled from original photogrammetric and field surveys, and may not be copied or reproduced without written permission.

Every effort has been made to ensure that the trails are correct and accurate. This does not mean that all trails are mapped, some may have been missed. Please be aware of this fact!

NYARA The Longest Day 2012 Map 2



Universal Transverse Mercator (UTM); Projection Zone 35
 North American Datum of 1983
 1000 meter UTM / USNG / MGRS
 Grid Zone Designation: 18U
 100,000-m Squares WL



Goose Pond Mountain

Monroe/Warwick, Orange Co, New York



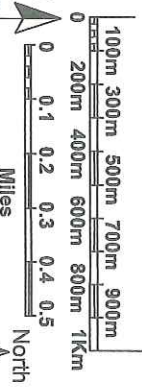
SCALE 1:20,000

Contours 5m

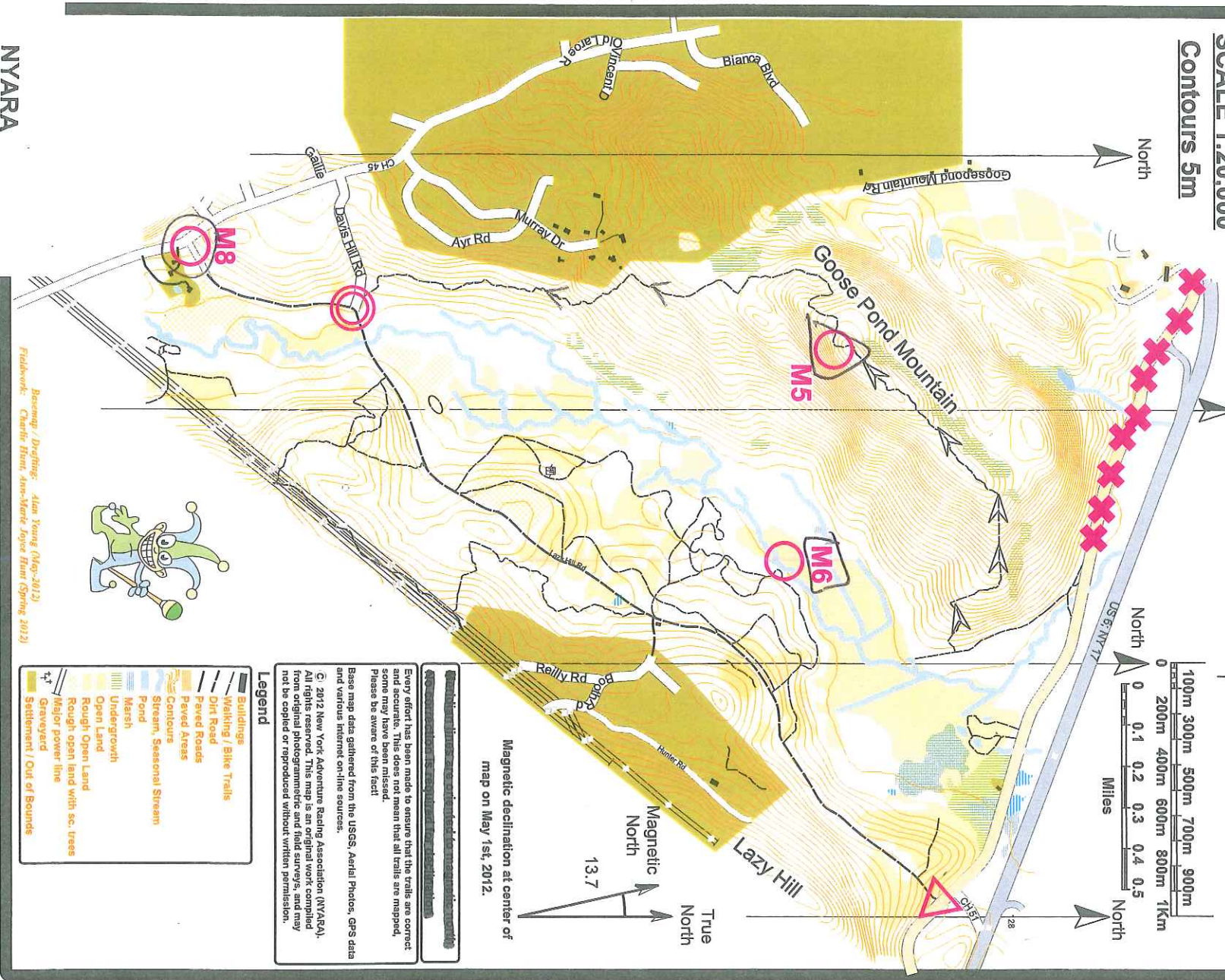
North

North

North



North



NYARA
The Longest Day 2012
Map 3