

Every effort has been made to ensure that the trails are correct and accurate. This does not mean that all trails are mapped, some may have been missed. Please be aware of this fact!

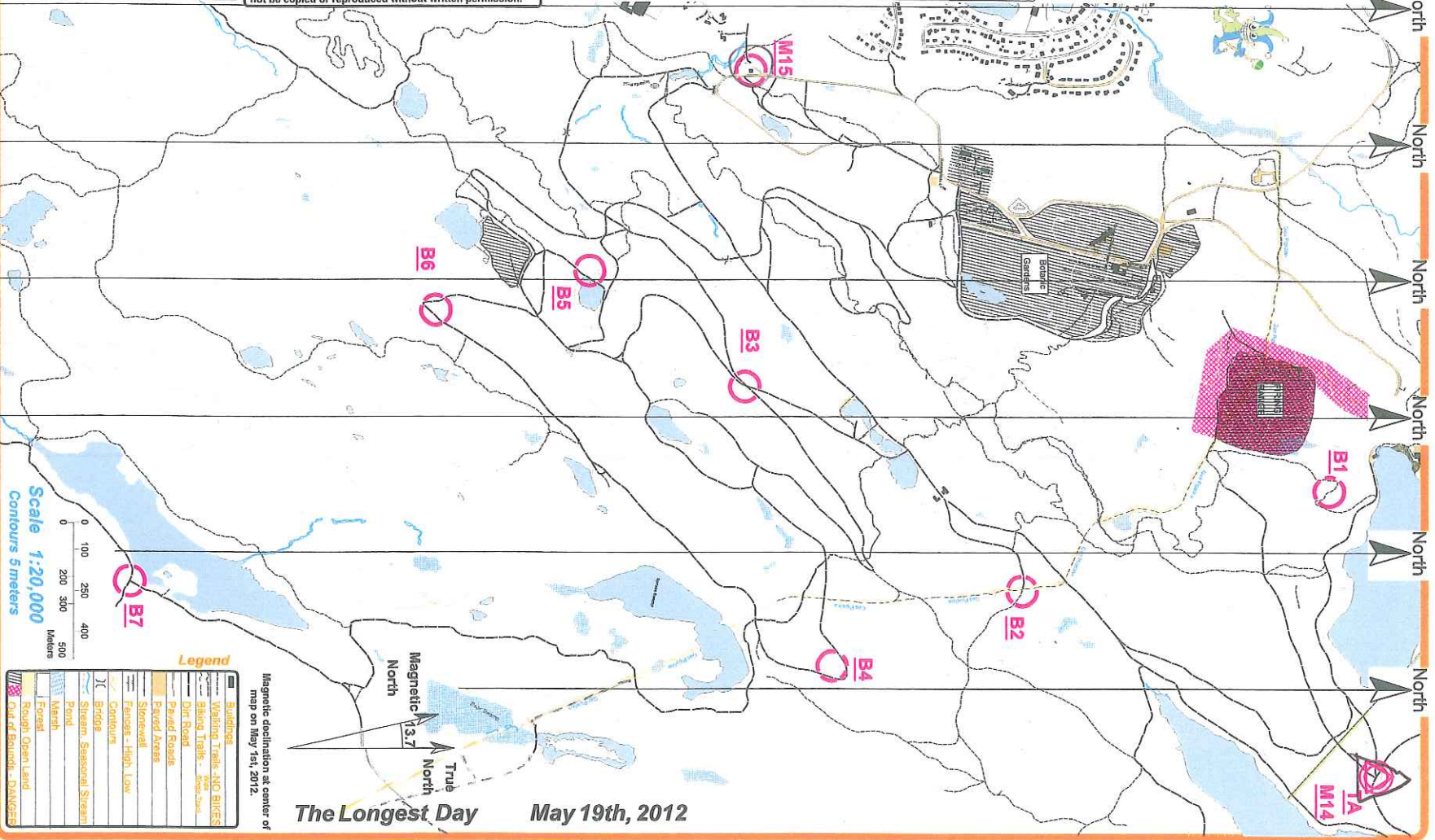
Base map data gathered from the USGS, Aerial Photos, GPS data and various Internet on-line sources.  
 © 2012 New York Adventure Racing Association (NYARA). All rights reserved. This map is an original work compiled from original photogrammetric and field surveys, and may not be copied or reproduced without written permission.

BaseMap: Pat Donohue Cartographic  
 BikeFieldwork:  
 Decline Elements, Alan Young 03-2007  
 Drafting:  
 Alan Young, Update, NY 03-2012



# Ringwood State Park

Ringwood, Passaic Co, New Jersey



The Longest Day May 19th, 2012

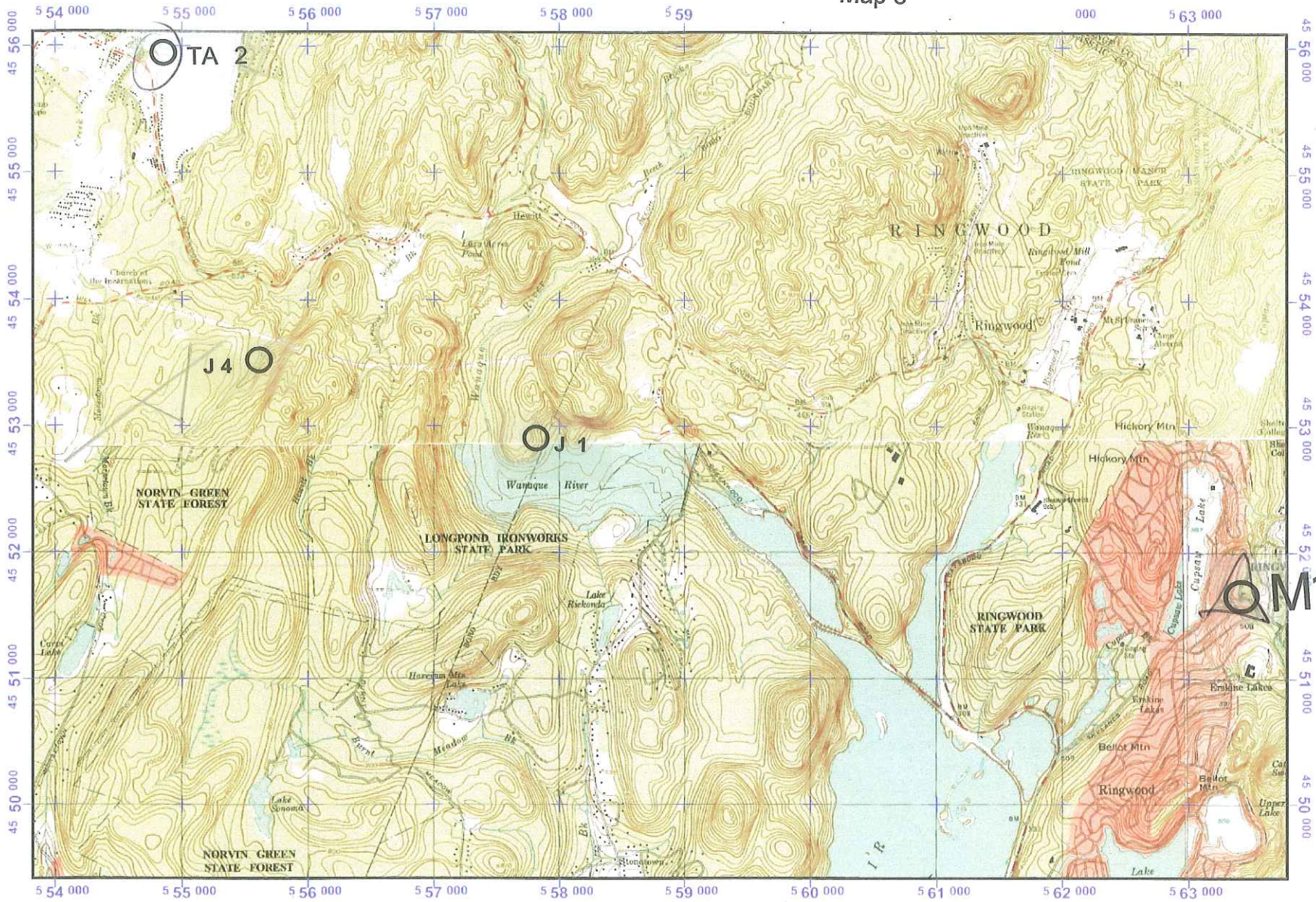
Magnetic declination at center of map on May 1st, 2012.



# NYARA

## The Longest Day 2012

### Map 8



1:40000 scale

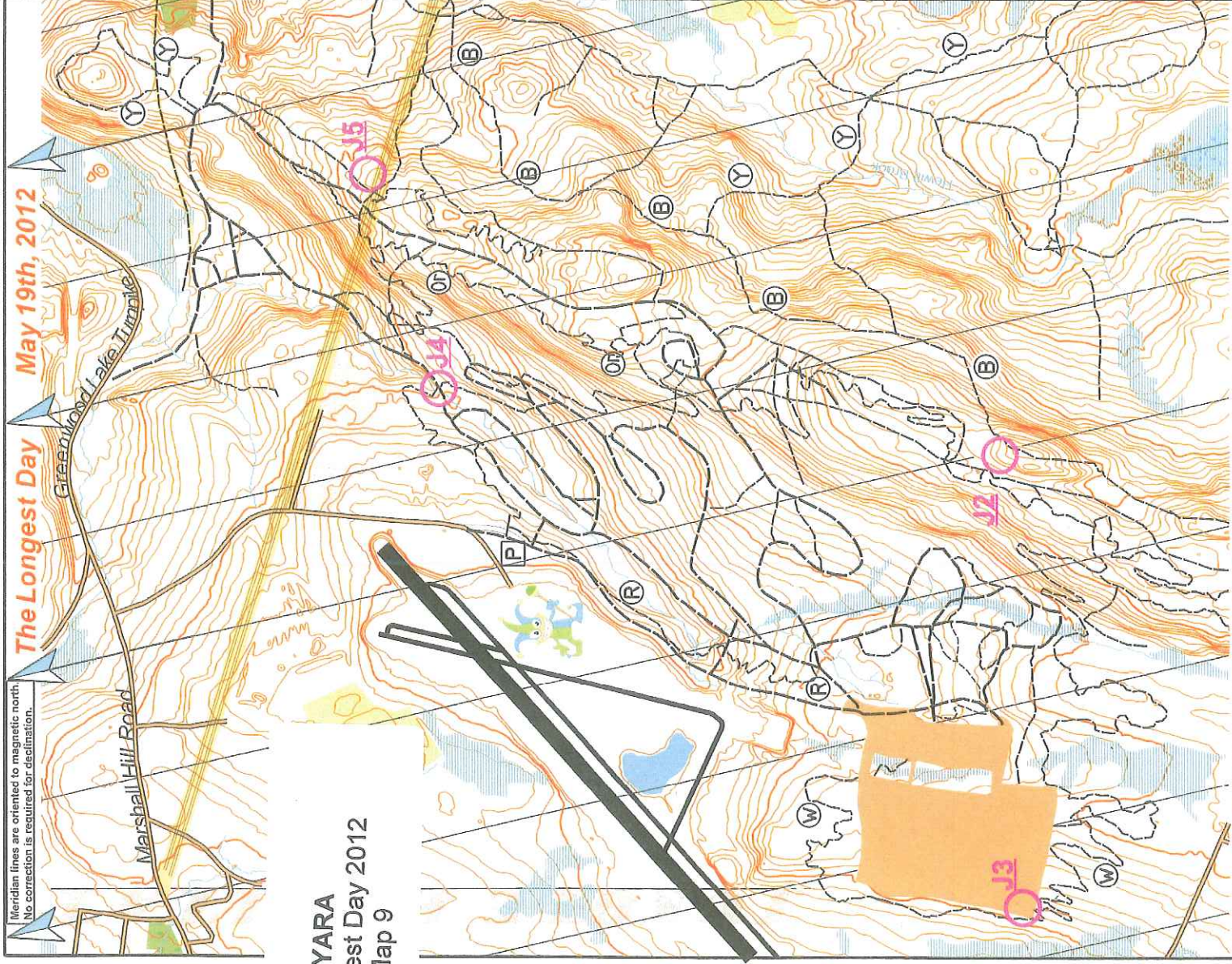
Vertical Transverse Mercator (UTM) Projection Zone 18N  
North American Datum of 1983  
1000 meters UTM / USNG / MGRS  
Grid Zone Designator: 18N  
100,000-m Squares W/L

0.25	0.5	0.75	1	1.25	1.5	1.75	2 Miles
0	0.25	0.5	0.75	1	1.25	1.5	1.75 2 Kilometers





Always N16 - TAZ



NYARA  
The Longest Day  
Map 9

Meridian lines are oriented to magnetic north.  
No correction is required for declination.

The Longest Day  
May 19th, 2012

- |  |               |  |                 |
|--|---------------|--|-----------------|
|  | PAVED ROAD    |  | MARSH / SWAMP   |
|  | SMALL ROAD    |  | STREAM          |
|  | VEHICLE TRACK |  | RIVER           |
|  | FOOTPATH      |  | POND / LAKE     |
|  | SMALL PATH    |  | OPEN LAND       |
|  | CONTOURS      |  | ROUGH MEADOW    |
|  | BUILDINGS     |  | THICK VEG       |
|  | OUT OF BOUNDS |  | DIFFICULT WOODS |
|  |               |  | PAVED PARKING   |
|  |               |  | SETTLEMENT      |

Mapped Area: Basemap: Eddie Bergeron, 2011 (LIDAR processing)  
Fieldwork: Sam Scaturro, 2011 Drafting: Alan Young, 2011

Every effort has been made to ensure that the trails are correct and accurate. This does not mean that all trails are mapped, some may have been missed. Please be aware of this fact!  
This map is the property of New York Adventure Racing Association, October, 2011.  
Base map data gathered from the USGS, Aerial Photos, LIDAR, Field checking and various internet on-line sources.





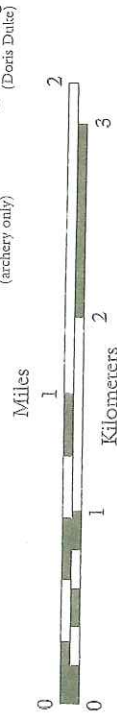


# Sterling Forest Trails

## Trail Map 100

2011 Edition

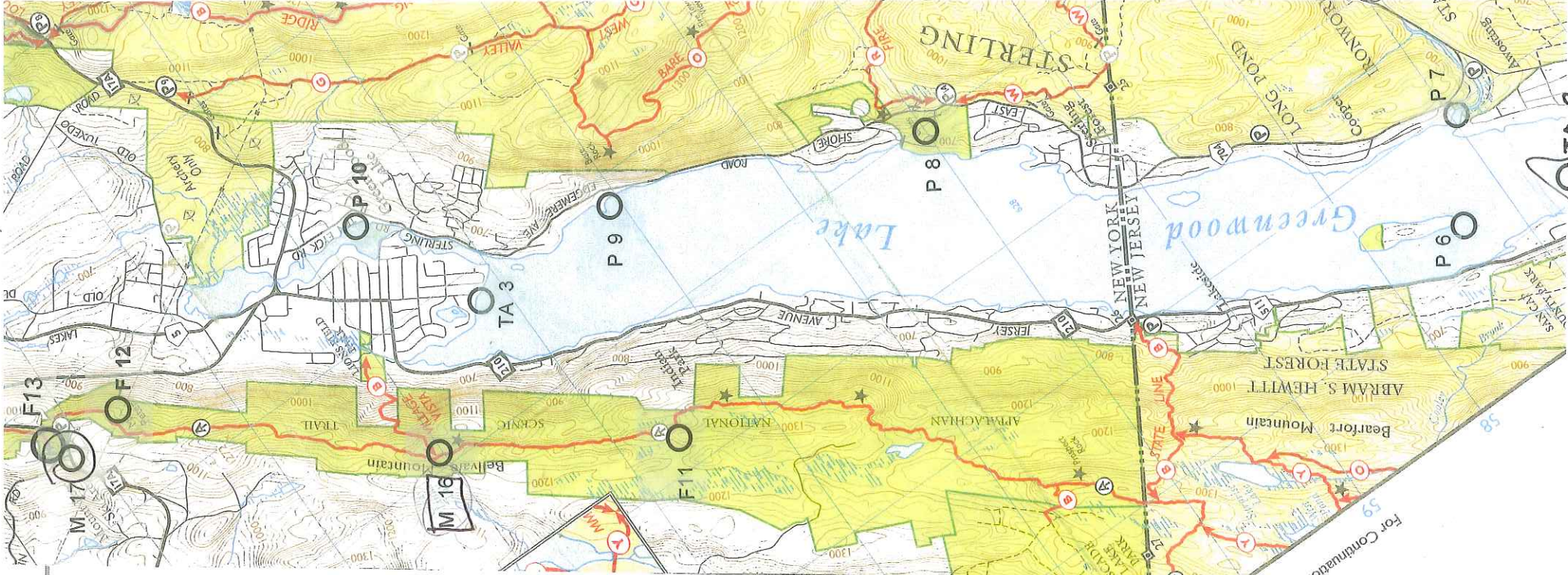
- Marked trails (trail color)**
  - White
  - Orange
  - Red
  - Yellow
  - Green
  - Magenta
  - Blue
- Woods roads**
  - White
  - Teal
- Appalachian Trail**
- Highlands Trail**
- Underground utilities**
- Power/telephone lines**
- Railroads**
- Interstate, NY State, or county route number**
- Parking; numbered parking; seasonal hunters parking**
- Bus stop; train station**
- Shelters and lean-tos**
- Scenic views; points of interest**
- Mine; tower**
- Keep out**
- Swamps and wetlands**
- Public open space**
- See reverse for names and regulations**



Copyright © 2011 New York-New Jersey Trail Conference, Inc.

This map was compiled and updated from USGS, OPRHP, CSCIC, NJDEP, and JDOT data and other sources. Land boundaries and trail locations are approximate. Original UTM coordinates referenced to NAD 83. Elevation contour interval, 20 feet. Scale 1:39,300 (1 inch represents .62 mile)

**NYARA**  
The Longest Day 2012  
Map 10



For Continuation see North Jersey Trails Map 116